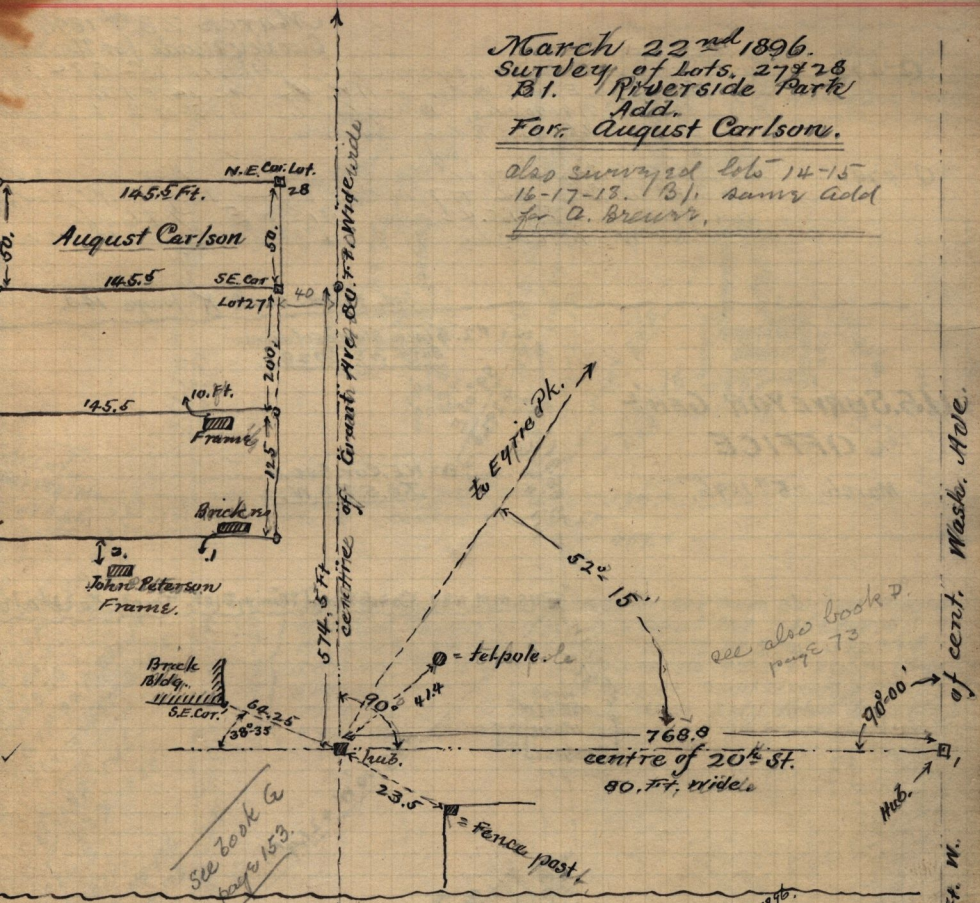


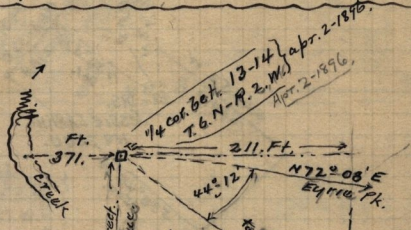
March 22nd 1896.
 Survey of Lots, 27 & 28
 Bl. Riverside Park
 Add.
 For August Carlson.

also survey of lots 14-15
 16-17-18. Bl. same add
 for A. Brewer.



see book C page 153.

see also book D page 73.



References to

stake 12.8 Ft. W. of line bet. Secs. 13-14, T. 6. N. R. 2. W.

- 16° 06' E 6.2 Ft. to cent. Mulberry tree
- 30° 07' W. 60.1 Ft. N.W. cor. T. Stangers house.
- 59° 21' E 66.2 to E. cor. brick stable.
- 5° 17' E true obs. Pk.
- 4. Co Road. 189° 39' E

SEE I page 70
 See this book page 196.

See Book I - page 70

10±35' W
 Fence on E. side of W. of Morris & East, etc.

889° 20'